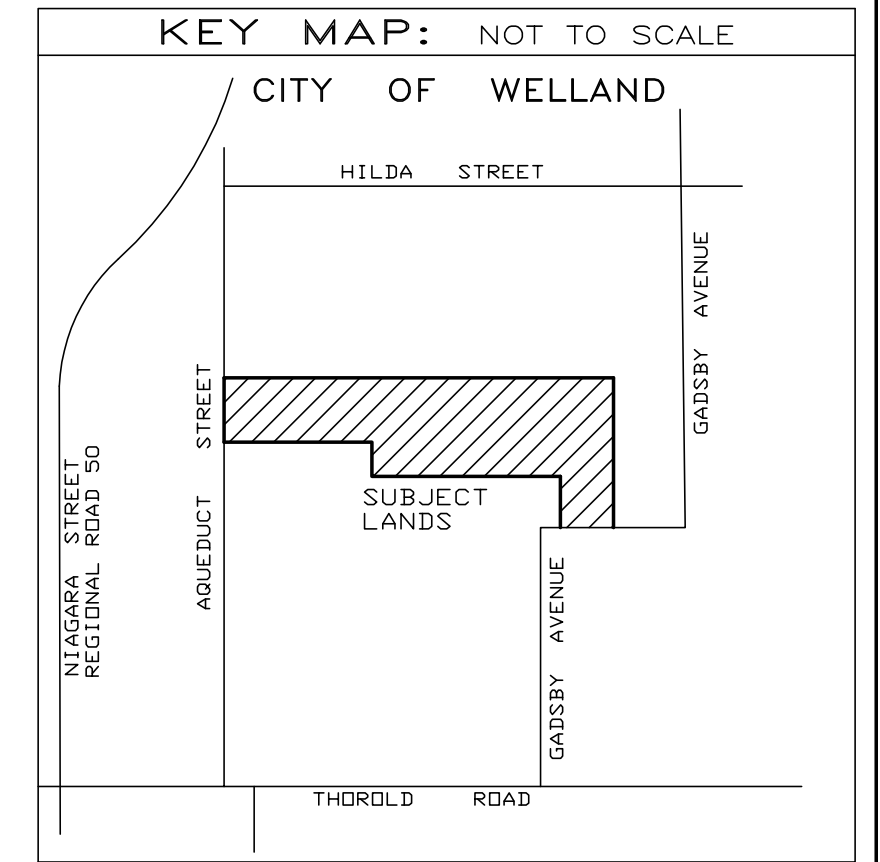
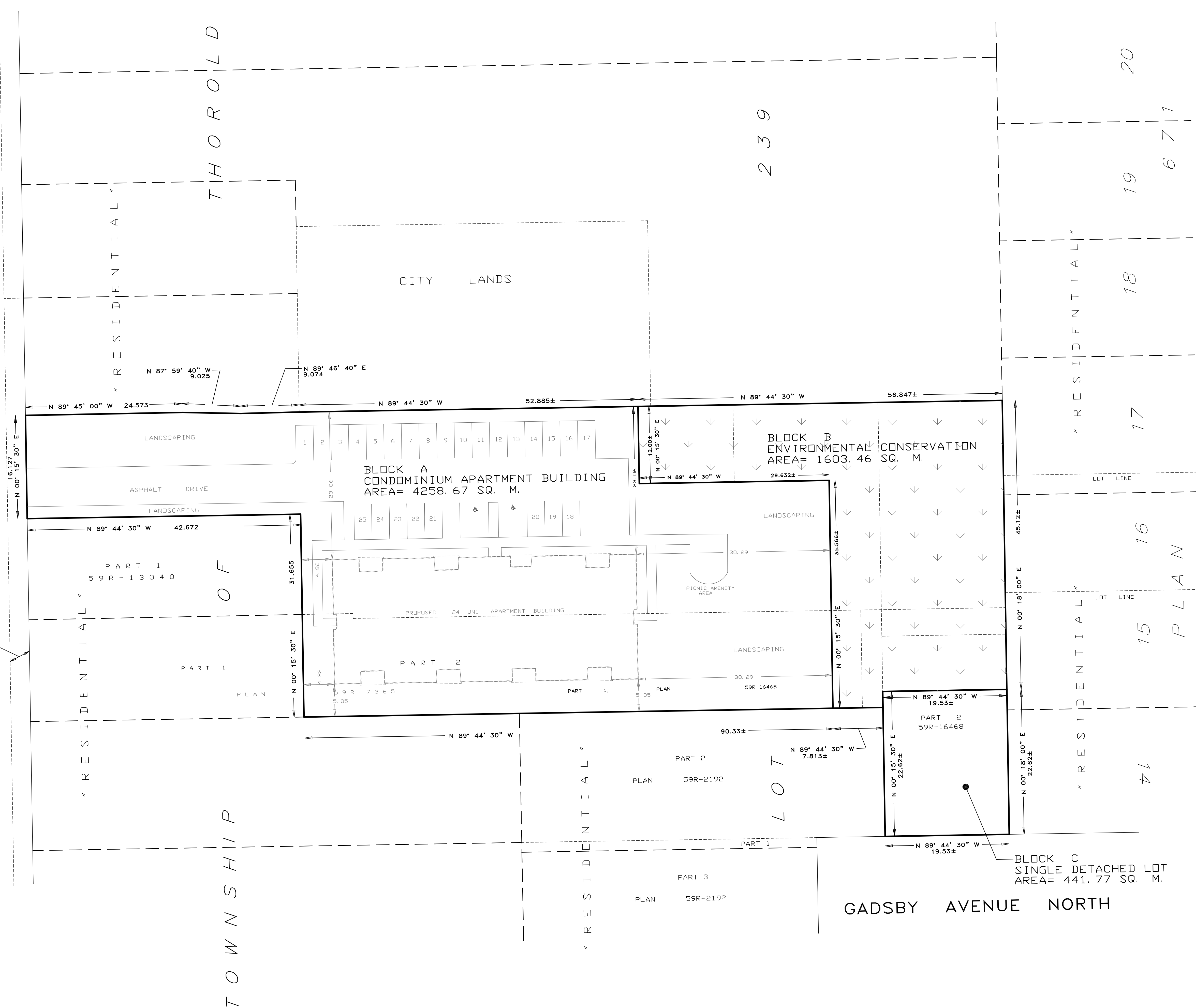
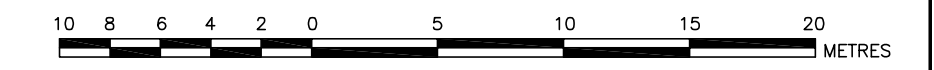


DEPOSIT PLAN 297
STREET
 (ROAD ALLOWANCE BETWEEN LOTS 239 AND 240)
 ROAD WIDENED BY PART 1, PLAN 232889



DEVELOPMENT PLAN
 PART OF LOT 239
 GEOGRAPHIC TOWNSHIP OF THOROLD
 IN THE
 CITY OF WELLAND
 REGIONAL MUNICIPALITY OF NIAGARA
 SCALE: 1 : 300



PART 1
 59R-13040

PART 1
 PLAN

BLOCK A
 CONDOMINIUM APARTMENT BUILDING
 AREA= 4258.67 SQ. M.

BLOCK B
 ENVIRONMENTAL CONSERVATION
 AREA= 1603.46 SQ. M.

PART 2
 59R-16468

BLOCK C
 SINGLE DETACHED LOT
 AREA= 441.77 SQ. M.

PART 2
 PLAN 59R-2192

PART 3
 PLAN 59R-2192

20

19

671

18

17

16

15

14

239

LOT

TOWNSHIP

THOROLD

"RESIDENTIAL"

"RESIDENTIAL"

"RESIDENTIAL"

PLAN

METRIC NOTE
 DISTANCES SHOWN ON THIS PLAN ARE IN METRIC AND CAN
 BE CONVERTED TO IMPERIAL BY DIVIDING BY 0.3048

NOTE
 THIS IS NOT A PLAN OF SURVEY

SUDA & MALESZYK SURVEYING INC.
 ONTARIO LAND SURVEYORS
 26 EAST MAIN STREET, WELLAND, ONTARIO, L3B 3W3
 TEL: (905) 732-7651

FILE NO: 20-170-1 JOB NO: 6237-1